

Service Area

ATS employs approximately 500 personnel in several branch offices throughout the Eastern United States. Although most of the laboratory testing services are housed in our headquarters location in Marietta, GA, we can provide inspection services anywhere in the U.S. or abroad.

Scheduling

ATS is always available to handle your inspection needs and will respond to each request in a prompt and timely manner. Simply contact us at the number below to schedule an inspection project or to set-up a visit by an ATS representative.

Quality Programs

ATS' Quality System is compliant with the recognized quality system standards for the various industries for which we perform testing and inspection. Testing and inspection services provided by ATS within our Quality System meet the requirements of the following standards:

- ISO 9001
- In Compliance with ISO Guide 17025*
- ASTM E 1492
- ASTM E 860
- NFPA
- IAAI
- NAFI



1049 Triad Court - Marietta, GA 30062
Corporate Office: 1-888-287-5227
www.atslab.com



ATS, founded in 1967 and headquartered in Marietta, GA is one of North America's leading consulting engineering firms with extensive testing and inspection capabilities delivering a combination of experience, professionalism and decisive responsiveness for our clients.

*All accreditations are granted to certain disciplines operating within ATS. Each certification/affiliation or accreditation has a special defined scope. Please visit www.atslab.com or contact the ATS Quality Assurance Department at 1-888-287-5227 for further details.

Capabilities

ATS has the capacity to send our highly qualified electrical engineers to any fire site to examine building systems for evidence that they may have precipitated a fire by evaluating building compliance and electrical codes, as well as initiating our extensive in-house fire investigative unit as to the cause delivering timely and decisive results.



Fire Investigation



Fire Investigative Services

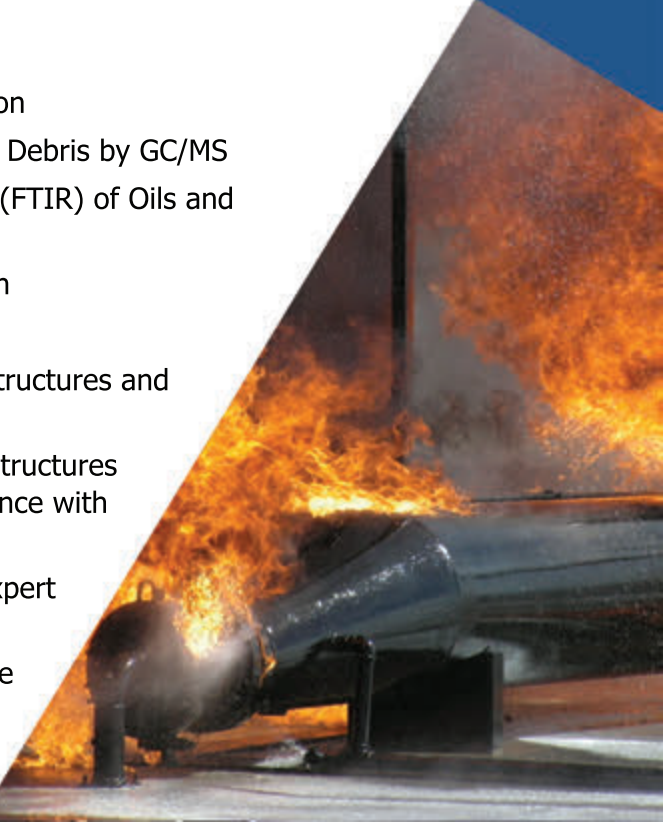
The practice of fire investigation requires a complex combination of skills, experience, and equipment. At ATS, we have the necessary resources to get the job done in a thorough and timely manner. Our on-scene investigators, chemists, and professional engineers work as an experienced problem-solving team to determine the cause and responsibility for fires. There are few fields of investigation more likely to result in litigation than the analysis of fires. We approach every assignment with the attitude that we are likely to be thoroughly cross-examined regarding our findings.

Common Capabilities:

- Origin & Cause Determination
- Vehicle Fire Analysis
- Ignition Lock Analysis
- Product Liability Evaluation
- Chemical Analysis of Fire Debris by GC/MS
- Infrared Spectroanalysis (FTIR) of Oils and Polymers
- Flash Point Determination
- Thermal Analysis
- Electrical Evaluation of Structures and Products
- Evaluation of Products, Structures and Services for Compliance with Fire Codes
- Litigation Support and Expert Testimony
- Secured Evidence Storage and Tracking



www.atslab.com
1-888-287-5227



Fire Investigation



Chemical Analysis of Fire Debris

The findings of ignitable liquid residues in a sample of fire debris is often the vital piece of evidence to support a determination that a fire may have been incendiary. Because of the importance of this evidence, ATS uses only state of the art techniques for the analysis of fire debris. Since we understand the need to quickly learn whether a sample is positive, we typically turn around our chemical analyses in 24 to 48 hours.

Capabilities & Equipment

All of our samples are processed using ASTM methods for separation and analysis. Our primary analytical tools:

- Gas Chromatograph
- Mass Selective Detector
- Automatic Liquid Sampler
- Differential Scanning Calorimeter
- FTIR Spectrophotometer
- Thermogravimetric Analyzer

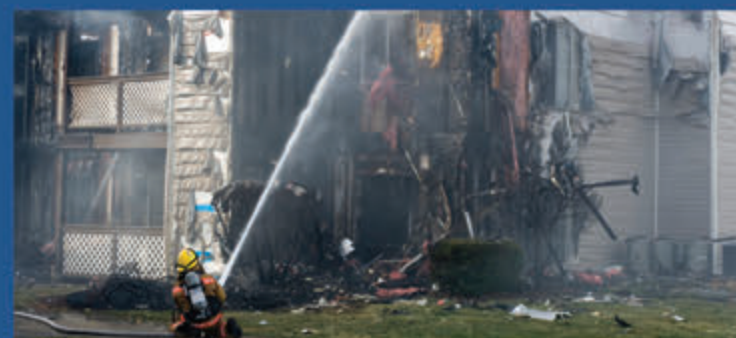


Product Testing Services

Electric and gas appliances and systems are frequently involved in fires. These items must be understood, examined, and either ruled in or out as the cause of the fire. The central question in electric and gas systems evaluation is the chicken-and-egg scenario of whether the system malfunction caused the fire or the fire caused the system malfunction.

Capabilities & Equipment

- Power supplies for 480, 277, 240, 208, 120, 24 and 12-Volt appliances
- Dry Test Meter measuring flows of Natural & LP gas
- Complete Photographic & Videographic Capability
- X-ray Facilities for Nondestructive Examination
- Thermal Behavior
- Scanning Electron Microscope for Close-up Examination and Chemical Analysis of Arc Beads
- Complete Metallurgical Facilities



Flammability Testing

Applied Technical Services offers an expansive range of fire standard capabilities in determining the flammability performance properties of products ranging from home furnishings, apparel, consumer appliances, aircraft and auto interiors, outdoor products, installation systems and more.

Capabilities & Equipment

- Fire Testing, Flammability and Fire Resistance
- Thermal Analysis and Testing
- Flammability Properties of Polymers
- Pyrolysis Combustion Flow Calorimetry
- Open Calorimeter
- Intermediate Scale Calorimeter (ICAL)
- Ignitability



When Quality is Non-Negotiable!

- Heat Release Rates
- Mass Loss Rates
- Smoke Development

Vehicle Fire Investigation

The analysis of a vehicle fire can be much more difficult than the analysis of a structure fire. Vehicles contain numerous systems that are capable of acting as fuel or ignition sources for fires. Our standard vehicle fire inspection includes complete photography, sampling of vital fluids, and checking for signs of arson. An extensive checklist is filled out for each vehicle fire, covering all major systems.

Vehicle fires have their own requirements for chemical analysis. We look at engine fluids for evidence of excessive wear that may indicate a possible motive for arson. Additionally, we can examine fluids for evidence of contaminants such as sugar or sand.

Our Marietta facility has a bay equipped with a 15,000 lbs. capacity vehicle lift, allowing for the proper inspection of vehicles from all angles, including the underside. We have on staff both electrical and mechanical engineers familiar with all major vehicle systems, and our ASE certified vehicle fire specialist knowledgeable of all types of vehicles, including but not limited to trucks, agriculture, forestry and mining equipment.

Ignition Switch Analysis

When a vehicle is stolen and recovered burned, a major issue involves the condition of the ignition switch. Our in-house capabilities, particularly our x-ray facility, allow for the identification of the ignition parts and keys that might otherwise be lost in the mass of debris found on the floorboards.

Applied Technical Services
www.atslab.com
1-888-287-5227