



Consumer Product Testing

We Take A Closer Look

Third-party CPSC Testing

- Toys
- Children's Products
- Electrical/Electronics
- Housewares
- Paints/Coatings
- Sporting Goods
- Jewelry

Product Testing

Applied Technical Services (ATS) is a Consumer Product Safety Commission (CPSC) accredited lab testing a wide range of consumer products. Since 1967 we have partnered with our clients to help meet consumer expectations, as well as all safety, regulatory, quality, industry and performance standards. We understand that consumer trust is imperative to your company's success. So it's critical that you provide products that meet safety requirements as well as consumer quality expectations. That's where ATS comes in. As a compliance testing partner, we support our clients by establishing testing plans and delivering the highest quality service that exceeds expectations.

Quality Programs & Accreditations

ATS maintains current standards and certifications to provide the highest degree of quality for our clients:

- ISO 9001
- ISO 17025 (A2LA) Accredited
- CPSC Approved
- Compliance with retailer requirements

Applied Technical Services

1049 Triad Court
Marietta, GA 30062



Website: www.atslab.com



Tel: +1 (888) 287-5227

Consumer Product Testing Services

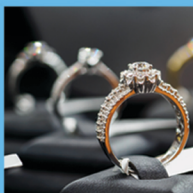
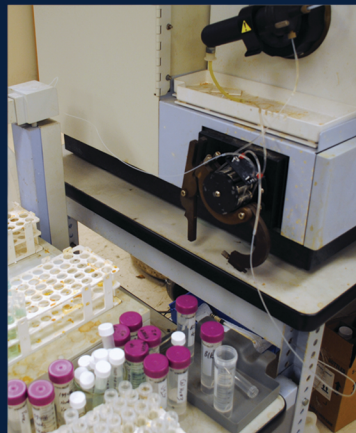
ATS provides full service testing to CPSC/CPSIA requirements:

- Total Lead
- Phthalates
- Soluble Metals
- Physical & Mechanical Hazards
- Flammability
- Age & Grade Determination

Testing is performed in accordance with ISO 17025 accredited methods:

- CPSC, ASTM F963-17, and CFR Standards

U.S. importers and manufacturers of toys and children's products are required to test and certify that their products meet federal requirements.



Lead Testing

Lead is a toxic heavy metal used for years in the building and construction industry. It is used in batteries, solder, some metal alloys (e.g. pewter, brass, etc.), ceramic glazes, polyvinyl chloride (PVC), certain glasses, oil-based paints, and for pigments in paints. Like other heavy metals, lead is a potent neurotoxin that accumulates in soft tissues and bone over time.

Lead poisoning damages the nervous system (especially in young children) and can cause blood and brain disorders, it has even been linked to learning disabilities in children at low levels. Lead poisoning typically results from ingestion of lead contaminated materials or lead based paint. The concern about lead exposure in children has brought about the passage of stricter legislation to reduce its use (the Consumer Product Safety Improvement Act of 2008). Current legislation reduces the limit of lead allowed as follows:

- Paint or surface coatings to 90 parts per million (ppm), effective 8/14/09
- Surface coatings to 100 ppm, which applies to children's products, effective 8/14/11

Client Service Excellence

What differentiates ATS is our unrelenting commitment to providing quality service. ATS accomplishes this by providing the following to our clients:

- Invaluable consultation during product development stage (prototypes)
- Services in accordance with applicable regulations, standards and specifications
- Services delivered in a timely manner
- Providing clear and accurate data/reports
- Accessible and highly qualified experts
- Ensuring compliance with retailer requirements

Types of Consumer Product Testing & Testing Capabilities:

- Lead in Children's Metal Products/Jewelry - CPSC-CH-E1001-08
- Lead in Children's Non-Metal Products - CPSC-CH-E1002-08
- Lead in Paint and Surface Coatings - CPSC-CH-E1003-09 and 16 CFR Part 1303
- Phthalate Analysis - CPSIA Section 108(a) - CPSC-CH-C1001-09.4
- BPA Analysis - ATS 367
- Soluble Metals Analysis - ASTM F963-17
- Toxics in Packaging Testing (CONEG)
- Toy Safety Requirements - ASTM F963-17



Website: www.atslab.com



Tel: +1 (888) 287-5227



Address: Applied Technical Services
1049 Triad Court, Marietta, GA 30062